



Utilities Director Joseph Sova
Landfill Superintendent Scott O’Laughlin

Service Statement

Landfill staff is responsible for safe, efficient and regulatory-compliant disposal of all non-hazardous solid waste in Midland County. Midland is a closed county, meaning Midland waste does not leave the State, and waste from other counties or states does not enter the county for disposal. The site is open Monday through Friday, 8:00 a.m. – 4:00 p.m. all year, and on Saturdays from 8:30 a.m. – noon during the months of March through November. Staff processes an average of over 100 vehicles per day, which amounts to roughly 550 tons per day of waste being buried. The site is subject to review and approval by its regulatory agency, the Michigan Department of Environmental Quality, in accordance with Part 115 of PA 451, as amended.

The site began filling the current waste disposal site, Cell 16, with residential refuse in fiscal year 2007-08. Partially filled Cells 14 and 15 are now being used for Type III (soil and construction debris) waste disposal. Waste disposal operations are being managed to optimize future potential for decomposition gas. Including permitted future cells, the site has over 40 years remaining.

A landfill gas collection and control system (GCCS) has been in operation since summer 2010. The GCCS collects the gas byproduct of waste decomposition and sends the gas to the gas-to-energy plant located at the City's Wastewater Treatment facility. During energy plant shutdowns, the gas is flared at the Landfill. Along with providing the fuel to offset current energy costs and reduce the need for natural gas, the GCCS has greatly reduced odor migration from the landfill and provides a source of revenue through sale of energy. Finally, in 2014 the bioreactor program began in Cells 15 and 16. The bioreactor accepts treated bio-solids sludge from the City's Wastewater Treatment Plant into the garbage received that day. This process will decompose waste more quickly, accelerating gas

generation. It will also reduce future environmental liability as the waste completes decomposition.

The City also runs a large scale yard waste composting operation on the property. Over 40,000 cubic yards of leaves and grass are ground, mixed, rotated several times and eventually screened to generate high-quality compost. The material is currently used completely on City projects. Tree and brush waste are also ground using a grinder, which is capable of processing logs over 30 inches in diameter. The ground wood is used for landfill roads and as waste cover.

Staff supports recycling and education at the site. We have a scrap metal drop-off area where metals are collected for sale to a recycling yard. Concrete and asphalt are recycled, and their use results in good road conditions in the waste disposal area. Tours are provided to hundreds of school students each year, educating them on how waste is handled and promoting recycling.

Staff hires consultants to perform groundwater, surface water and air monitoring at the site to insure against the release of pollutants from the site. Landfill staff strives to maintain a park-like appearance through grounds keeping, litter control and dust minimization.

The Landfill provides funding and a drop off location for four household hazardous waste collections held annually. The materials are taken off site for proper disposal by a hazardous waste disposal firm. The program is provided to citizens at no expense. Electronic waste recycling collection has also been added to the daily operation of the on-site Midland Recyclers to minimize those materials being disposed at the site.

Service Statement (cont.)

Citizens have convenient access to dumpsters on a paved, elevated pad for disposal of small volumes of waste. Each household in the City of Midland and Midland County is allowed a single visit each month of up to three cubic yards of waste at no charge (excludes tires; maximum one appliance). Additional volume or visits within the calendar month are charged at the rates posted at the site and in the City's Code of Ordinances. Disposal fees were reduced in 2003 for all waste types, and had not increased during the ten prior years.

Functions

Waste Disposal for Midland County

- Residential waste drop-off area for convenient disposal for citizens, including 3 yards per residence per month for free
- Commercial/industrial non-hazardous solid waste
- Asbestos
- Contaminated soil

Recycling

- Collects landfill gas to fuel energy production facility and reduce pollution
- Yard waste: 40,000+ yards of leaves & grass processed into compost annually
- Grinds up brush for internal use
- Separates scrap metal where possible and sells for scrap value
- Keeps concrete & asphalt waste separate for crushing & reuse as road and road base material on site

- Uses waste foundry sand when available for daily waste cover, reducing use of virgin sand for cover
- Supports Midland Recyclers, located on site
- Provides free tours to schools from pre-school through college ages, and community groups

Site Maintenance

- Maintains park-like appearance
- Dust minimization
- Pump system maintenance
- Controls litter
- Erosion prevention
- Gas odor control
- Pump system maintenance

Regulatory Compliance/Environmental Stewardship

- Customer service: processes an average of over 100 vehicles daily
- Inspects loads to prevent prohibited waste disposal
- Keeps records for reporting to Michigan Department of Environmental Quality and Environmental Protection Agency
- Monitors groundwater to verify no contamination of water table beneath site
- Installed a landfill gas collection system to reduce odor concerns and generate renewable energy
- Implemented bioreactor landfill cell to extend site life and reduce future liability

Financial Statement

517 - Landfill
 Detail of Budget Appropriations and Revenues
 Fiscal Year Ending June 30, 2018

	2015-16	2016-17		2017-18	2018-19	2019-20
	Actual	Amended	Estimate	Proposed	Projected	Projected
Revenues						
Federal grant	\$ 545	\$ -	\$ -	\$ -	\$ -	\$ -
State grants	91	-	-	-	-	-
Service and supplies sales	3,340	8,000	25,500	6,000	6,000	6,000
Use and admission charges	3,680,790	3,355,000	4,215,000	2,715,000	2,715,000	2,715,000
Other	5,341	5,000	18,006	5,000	5,000	5,000
Non-operating	580,365	94,259	110,759	54,465	104,465	114,465
Investment earnings	45,471	17,252	(7,094)	16,652	16,652	16,652
Transfers in	-	-	-	-	-	-
Total revenues	4,315,943	3,479,511	4,362,171	2,797,117	2,847,117	2,857,117
Expenses						
Personal services	1,240,831	1,332,794	1,284,274	1,514,688	1,546,292	1,591,060
Supplies	196,532	255,549	284,950	283,770	284,770	285,770
Other services and charges	1,333,870	1,465,350	1,506,336	1,502,605	1,427,620	1,464,425
Reserve for contingencies	-	35,000	35,000	50,000	50,000	50,000
Non-operating	260,896	700	5,549	700	25,326	700
Capital projects	65,326	1,580,000	1,580,000	725,000	930,000	530,000
Capital outlay	127,674	574,294	570,944	600,000	460,000	265,000
Total expenses	3,225,129	5,243,687	5,267,053	4,676,763	4,724,008	4,186,955
Excess of Revenues Over (Under) Expenses	1,090,814	(1,764,176)	(904,882)	(1,879,646)	(1,876,891)	(1,329,838)
Other non-working capital adjustments	(191,833)	-	-	-	-	-
Working Capital - beginning	6,482,057	7,381,038	7,381,038	6,476,156	4,596,510	2,719,619
Working Capital - ending	\$ 7,381,038	\$ 5,616,862	\$ 6,476,156	\$ 4,596,510	\$ 2,719,619	\$ 1,389,781

Summary of Budget Changes

Operating Trends



Significant Notes – 2017-18 Budget Compared to 2016-17 Budget

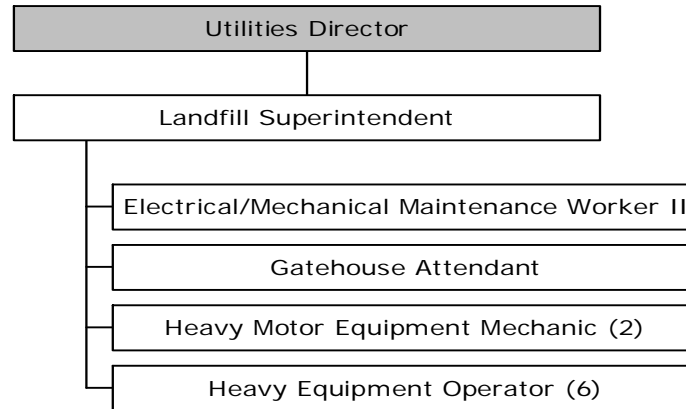
In fiscal year 2017-18, the focus continues to be gas production and collection, to meet the goals of minimizing odors and maximizing energy production. Treated bio-solids liquid sludge from the City’s Wastewater Treatment Plant will continue to be applied to the waste being buried at the Landfill. The bio-solids accelerate waste decomposition and gas generation. As areas are filled with more waste, additional gas collection pipes will be installed.

Staff is evaluating significant road repairs for aging asphalt infrastructure around the site. Staff will look to replace a wheel

loader and consider options for additional equipment storage and maintenance space at the facility. Efforts are also increasing for maintenance of older, closed landfill cells.

Finally, funding for future construction of Cell 17 will continue this fiscal year. In each of the next two years, money will be set aside to fund for construction scheduled to take place between fiscal years 2017-18 and 2018-19.

Organizational Chart



Shaded boxes indicate a reporting structure to a department head that is funded outside of this budget.

Staff Summary	Approved 2015-16	Approved 2016-17	Adopted 2017-18
<u>Full-Time</u>			
Landfill Superintendent	1	1	1
Electrical/Mechanical Maintenance Worker II	0	1	1
Electrical/Mechanical Maintenance Worker I	1	0	0
Gatehouse Attendant	1	1	1
Heavy Motor Equipment Mechanic	1	1	2
Heavy Equipment Operator	6	6	6
Total Full-Time	10	10	11
<u>Regular Part-Time</u>			
None	0	0	0
Total Regular Part-Time	0	0	0
Department Total	10	10	11